

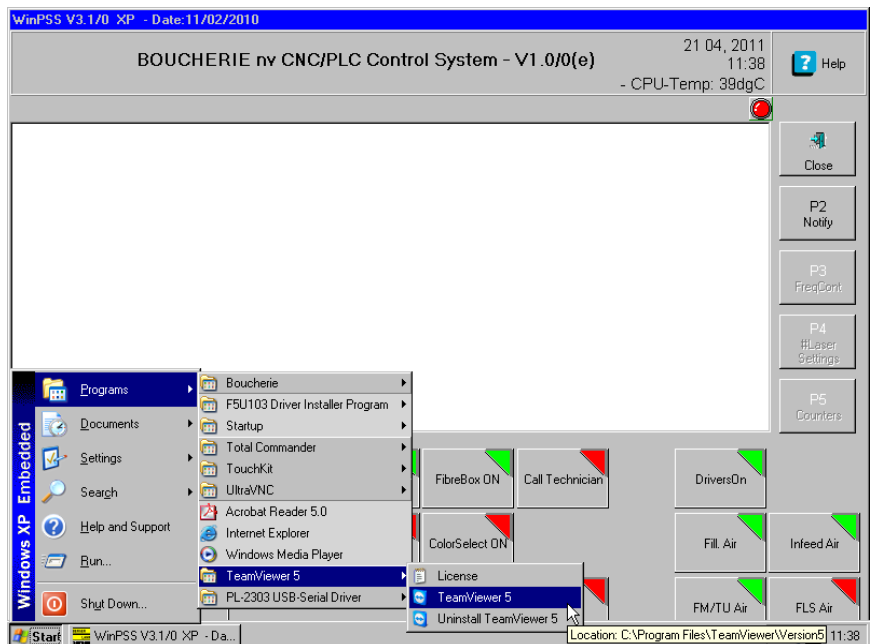
To give support, boucherie can remotely connect to the machine's controller.

① The machine controller has to be connected to the Internet. *To set up an internet connection, see page 2.*

Follow this procedure to make a connection:

Touch the task bar on the machine controller and select:

- ☞ Programs
- ☞ Teamviewer 5 (6)
- ☞ Teamviewer 5 (6)



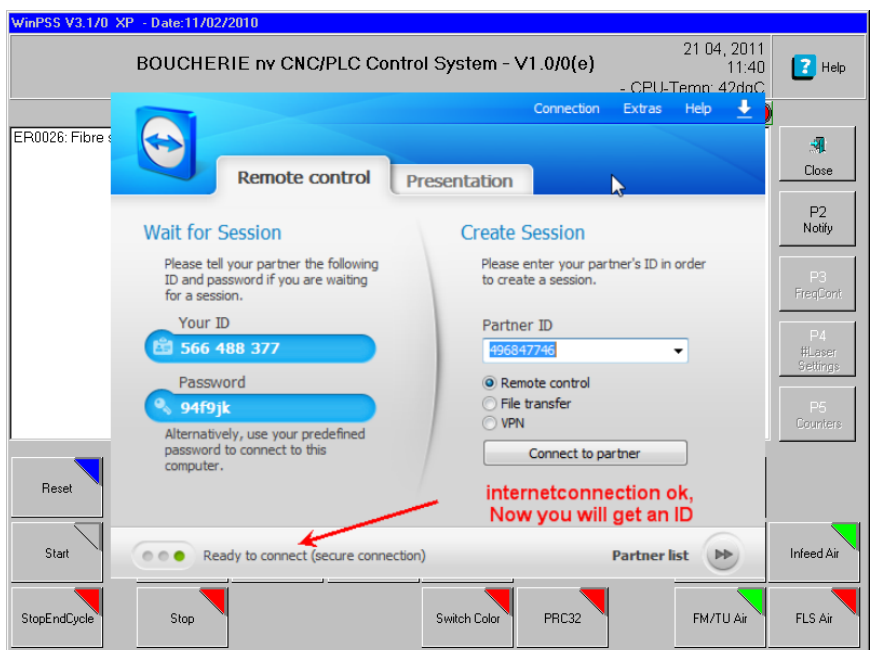
The TeamViewer window is displayed.

If the internet connection is O.K., you will get an ID and password.

Pass this password to boucherie and our technicians will be able to make the connection.

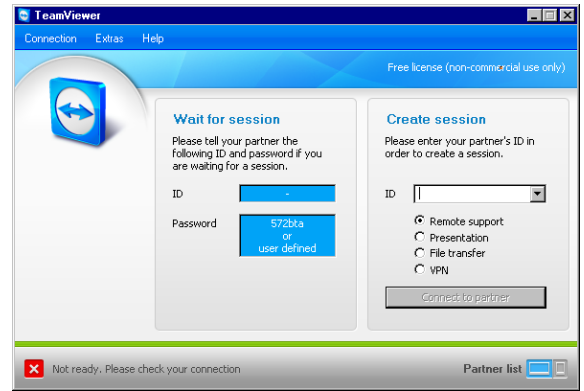
① When the internet connection is not O.K., TeamViewer will display 'Not ready. Please check your connection' at the bottom of the screen.

See next page for more details.

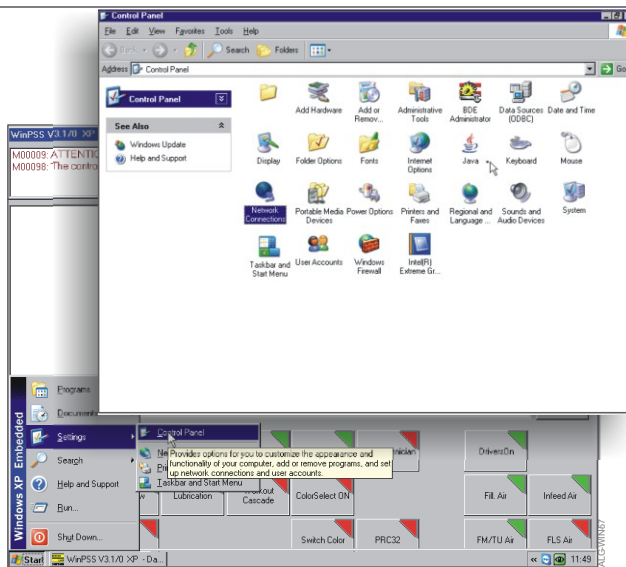


Connecting the machine controller to the internet

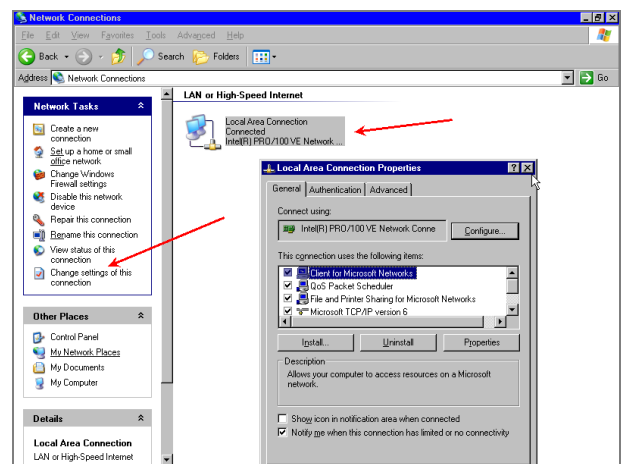
TeamViewer will display this screen in case there is no internet connection.



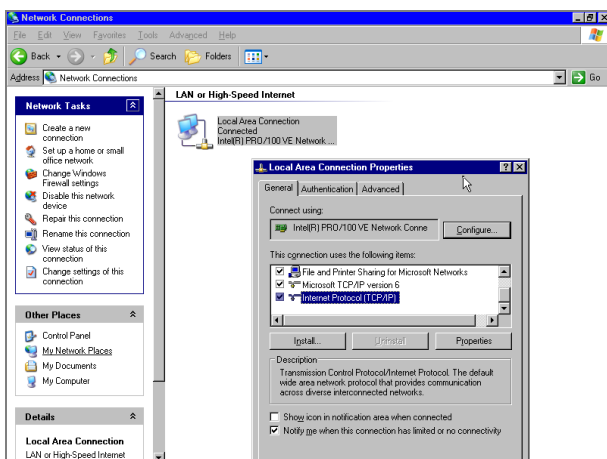
To check or configure the internet connection on the machine controller, proceed as follows:



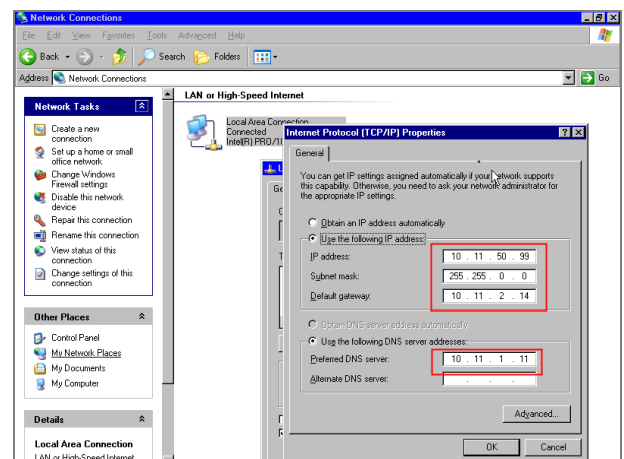
- ☞ Windows taskbar ☞ Start ☞ Settings ☞ Control panel
- ☞ Select 'Network connections'



- ☞ select 'Local area connection'
- ☞ select 'Change setting of this connection'



- The window "local connection properties" is displayed.
- ☞ select 'Internet Protocol (TCP/IP)' and
 - ☞ press 'Properties'



- Ask your IT department to check this settings and to make an internet connection:
- IP address
 - Subnet mask
 - Default gateway