

boucherie - 1928-2013 - Celebrating 85 years of success

After GB Boucherie nv. had been in operation for fifty years, the then president, Lionel Boucherie, wrote the following words:

"Our company can look back on a history of over half a century. There were good days and bad days. The creation of new designs and the satisfaction when the results of our efforts met with our goals, our love for the technical science and its achievements, and our concern for the well-being of those we employ, were the moving forces that gave us the energy and the perseverance to continue and to reach our present level.

Our current position as one of the world leaders in our industry proves that we have been successful in the past and that we do not hesitate to be innovative even in difficult situations.

We take this opportunity to thank sincerely all our employees for their enduring efforts, and also our customers spread all over the world, for their lasting confidence.

We dare hope that they will continue to work with us in the same cooperative spirit.

We wish and hope that our company will endure and grow in the same spirit of creativity and renewal to the benefit of all those concerned"

Another thirty-five years have passed since these words were penned. The spirit embodied in Lionel's writing endures to this day, it will continue to be our guiding light.

1928-1929

The beginning of GB Boucherie nv. can be traced to 1928. Gerard B. Boucherie, a then 25 year old mechanic who worked in a local brush factory, built an automatic broom trimming and cleaning machine in his mother's living room.

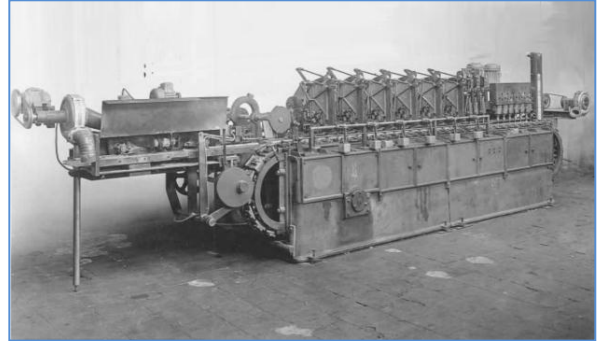


Gerard B. Boucherie 1903-1992

Shortly thereafter, the young Gerard decided to start his own company. Within three years he had filed a patent on an automatic wood brush block shaper, and had begun to export these machines to other European countries.

In 1932, Lionel, the second of fourteen Boucherie children, was born. At about the same time, Gerard purchased land in the Stuienbergstraat and built the first Boucherie factory.

In 1939, just prior to the outbreak of the second World War, the first fully automatic machine was delivered to the USA. It was a 4-header nailbrush machine, with built-in hopper-feed, automatic drilling and filling, and integrated finishing. This machine produced an astonishing 740 brushes per hour.



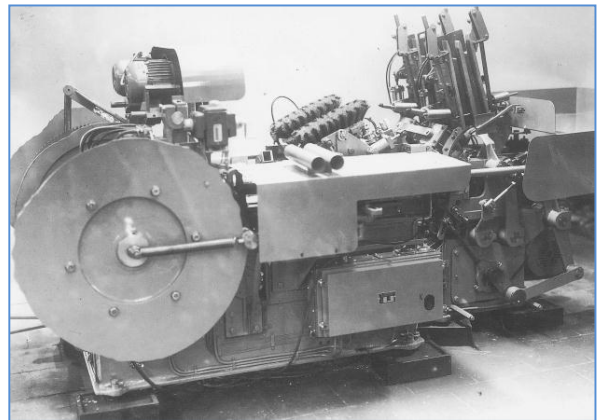
After the war, also a 6 header version (!) of this machine was built.

Before the decade came to an end, Gerard Boucherie built his first carousel machine, which was a single header with three stations.

In 1949, Lionel Boucherie finished school and started working with this father as a lathe operator.

1950-1959

1953 proved to be an important year for Boucherie. The world's first staple filling tool, with staple forming outside the filling tool, and at a different level to the driver, was patented. Together with his son-in-law Emiel Vandamme, Gerard constructed the first AIT, a double head carousel machine with a four-sided turret. The output was 390 tufts per minute with a 120 mm stroke.



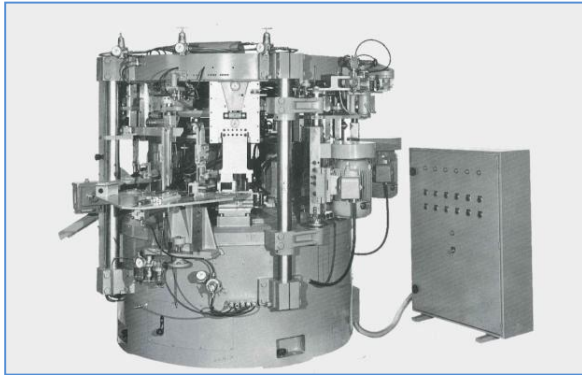
All cams in the filling tool drive mechanism were double conjugated; this has remained the standard on Boucherie machines to the present day.

Lionel Boucherie rounded out his education by sailing to the USA, and working in a tool and die shop in New York for 6 months.

By the end of this decade, the AIT-machines were being built in series, and a smaller machine, type AIR for fine brushware, was added to the range.

In 1958, the first C-shaper for the mass production of wooden brush blocks was built.

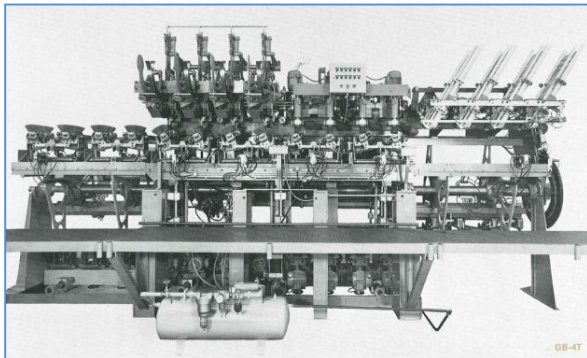
To this day, C-shapers are unsurpassed in their output. Until a few years ago, the original C-shaper was still in production.



1960-1969

The sixties saw the genesis of Plast-O-Form, Boucherie's mould making division, and a new factory extension was built to house its activities. Lionel Boucherie headed this new operation, and in 1968, when his father retired, he became the president of the Boucherie company. In the same year, Plast-O-Form took delivery of their first Agie spark erosion machine.

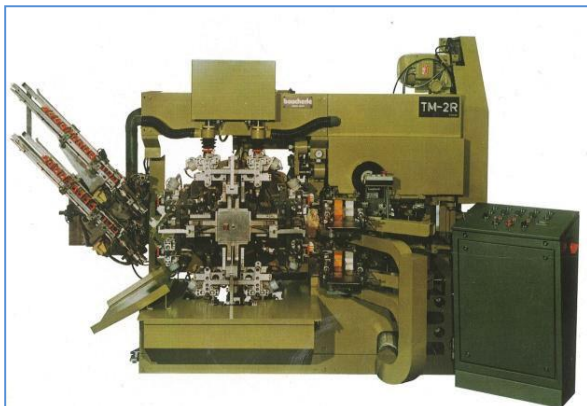
The following year saw the introduction of the GB-4T, a 4-header fully automatic transfer machine for the production of coco brooms. It was delivered to a customer in Ireland.



At the same time, a smaller variant, the GB-2R was constructed using the same concept and these were built in series production. This machine was the immediate predecessor to the better known TM-2R.

1970-1979

The seventies opened with the filing of the patent for the TM principle. This featured a four-station carousel where only the tables in front of the drills and filling tools move. The other two remain stationary for trimming and loading/unloading.

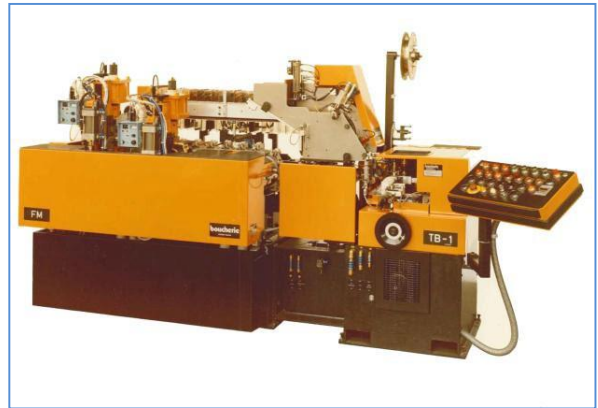


In 1973, the first TM-2R was introduced. With over 500 having been delivered worldwide, these machines have been an unqualified success. Although the patent was written for a carousel with a vertical turning axis, the TM's were built with carousels where the rotating axis was horizontal.

In this same year, a new, 5000 m² assembly and machining hall was constructed. The following year, the first CNC-machining center was installed. The Burr TC1-3400 was the largest investment the company had made to that date.

1978 saw the introduction of the world's first "single-in-line" toothbrush machine.

This machine featured a fully automatic handle feeder, 560 tufts per minute and an integrated finishing machine.



The TB1-FM machine revolutionized the toothbrush business and forever changed the way toothbrushes are made. The advent of the TB1-FM machine may be the most important moment in our 85-year history.

Also in 1978, Brian Donelson founded, CSD International, which was later to become Boucherie USA.

1980-1989

During the eighties, Boucherie completed the acquisition of Stove, a local company that had been manufacturing brush making equipment since 1912. A new office complex was inaugurated. It featured new, modern conference rooms, a customer acceptance and demonstration/test area, new offices for sales, project management and the ICT department.

In 1981, CSD opened a parts warehouse in the United States. Boucherie began making and marketing packaging machines (1984) and Lionel's son Bart Boucherie, Jr. spent an entire year working with CSD international (1985).

In 1988, at Interbrossa, Boucherie introduced the first TB3-FM. This new generation of toothbrush production lines featured the world's first "positive in-feed" of the handles into the turret, and the world's first automatic universal clamping system.

At the same show, the SM-A, the world's first 5 axis CNC drilling and filling machine, with a revolutionary cassette style clamping system, debuted.

1990-1999

The nineteen nineties proved to be a tremendously active decade for Boucherie.

The highs however, were tempered by the loss of our founder, Gerard B. Boucherie, who passed away in 1992 after a protracted illness.

Boucherie opened this decade by building a new central parts warehouse with an order-picking "IG" lift, and picking area for spare parts. The first of our two component moulds was completed in 1991. This was followed in 1992 by the acquisition of Darimont, a mould maker based in Antwerp. With its thirty employees, this company was purchased to ease lead-times in building injection moulds. In the same year, the TM machines were undergoing a major redesign. This resulted in a much higher production rate, and the ability to run anchor and staple filling tools on the same machine.

The buildings of the adjacent brush factory, Dilecta, were bought, modernized and subsequently utilized as the headquarters for Plast-O-Form. New, large DIXI machining centers were purchased, and installed in a climate-controlled hall that was custom built to house these extremely precise machines. They were used to support flexible manufacturing of moulds and machine parts.



This was followed, in 1996, by the building of a new mould assembly hall, and an adjacent new mould technology center with several multi-component injection moulding machines.

Also in 1996, at Interbrossa, Boucherie unveiled the TB42-FM, a double-header toothbrush machine with an output of 1700 tufts per minute. It was the most productive toothbrush manufacturing cell available at that time.

The following year HSC-milling technology was introduced. Boucherie purchased 20 acres of industrial area outside the town of Izegem for further expansion.

Lionel Boucherie celebrated fifty years of working with company.



Mr. and Mrs. Lionel Boucherie

Boucherie closed out the decade by acquiring Macome, a small mould making company outside Izegem

2000 - Present

Boucherie opened the new millennium by building an assembly hall of 7000m2 on part of the 20 acres of land previously mentioned.



The AFT machine (anchorless tufting technology) was presented to the trade at the Luxemburg Brush-Expo show. We also introduced the TB84-FM/CNC, a four head toothbrush machine capable of producing up to 100 heads per minute, and the DF-R/CNC, a household machine targeted to the economy markets. The IDM interdental and mascara brush machine was unveiled, and a newly designed quintuple fibre box for toothbrush machines was displayed for the first time.

Boucherie Latin America was established, headed by Mr. Andres Becker.

The following year saw the acquisition of INMT, a mould maker near Izegem. This brought added capacity for assembly, maintenance and optimization of moulds. The wire-erosion department was completely converted to robotics.

In 2000, Lionel Boucherie passed the torch of leadership to his son Bart Boucherie Jr. as president of the company. At the same time, Bart Boucherie Sr. assumed responsibility for all machine assembly and engineering operations.

In 2001, the plastics technology group was formed and offices were opened in India and China.

In 2002, a new R&D facility was inaugurated. Called the "Zandstraat"-Department, it is a 4500m2 facility, which also houses additional machining capacity.

In the same year, Mr. Frans Boucherie retired after 42 years with the company in various technical and sales functions.

On December 31st, 2003 Brian Donelson retired from Boucherie USA Inc. John Williams became president.

In 2007 the assembly hall-site was expanded with another 4000m2 covering a new sheet metal and paint shop as well as a new central warehouse and shipping and receiving area.

In 2008 the new TCU line of carousel machines for household brushes was introduced as a successor to the TM-line.

In the same year, Bart Boucherie Sr. celebrated 40 years with the company.

Continued On Page 90

Boucherie:*Continued From Page 63*

By the end of the decade, the TCU line was further enhanced with various new types and configurations, allowing us to offer tailor-made solutions for our today's highly differentiated customer - base.

At the same time, the 60th AFT line was delivered, highlighting Boucherie's leadership position in anchorless toothbrush technology.

In 2011, Mr. Marcus Boucherie passed away. Marcus had also worked all his life with the company until he retired in 2005.

In 2012, numerous world - novelties were introduced at the Interbrush show in Freiburg, Germany which were largely covered in previous "Broom-Brush and Mop" issues.

These new developments for toothbrush and brush production emphasize Boucherie's continued dedication to innovation, which it inherited from its founders.



From left to right: Mr. Frans Boucherie, Mr. Mitake, a customer from Japan, Mr. Lionel Boucherie, Mr. Bart Jr. and Bart Sr. Boucherie.